

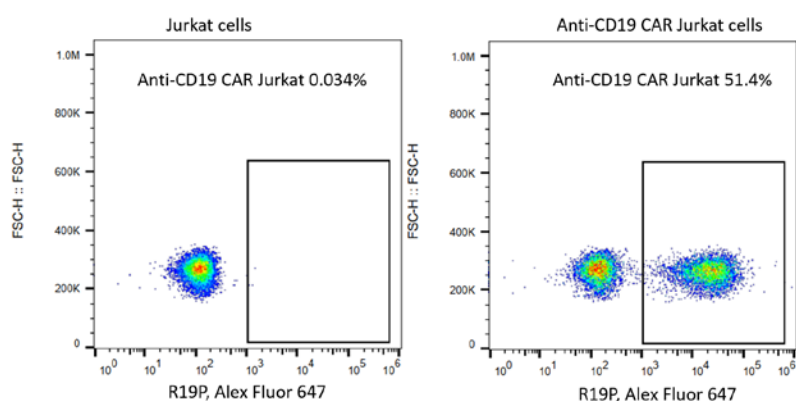
## Technical Data Sheet

### Rabbit Anti-Mouse FMC63 scFv Polyclonal Antibody

Product Information	
Product No.	500019
Concentration	1.0 mg/mL
Size	100 µg
Antibody Types	Polyclonal
Antibody Format	Whole IgG
Immunogen	scFv region of a CD19-specific mouse mAb clone FMC63
Host Species	Rabbit
Reactivity	Mouse
Storage Buffer	PBS, pH 7.4
Storage conditions	-20°C

#### Description

The rabbit polyclonal antibody R19P specifically binds to the scFv region of a CD19-specific mouse monoclonal antibody (mAb, clone FMC63). CD19 antigen is a B-cell specific cell surface antigen, which is expressed in all B-cell lineage malignancies and normal B-cells. The scFv region of FMC63 has been used to develop CD19-specific chimeric antigen receptor (CAR) T cells utilized in clinical trials.



*Flow cytometric analysis of anti-CD19 CAR expression on human cell line Jurkat cells. Jurkat cells were transduced with lentivirus encoding anti-CD19 CAR and cultured.  $2 \times 10^5$  cells were stained for the expression of anti-CD19 CAR with Rabbit Anti-Mouse FMC63 scFv Polyclonal Antibody (Product No. 500019, right panel). Secondary staining was carried out with AffiniPure F(ab')<sub>2</sub> Fragment Goat anti-Rabbit IgG(H+L), Alexa Fluor 647 (Product No. 700002). Non-transduced Jurkat cells were used as a control for gating of CAR expression (left panel). Acquisition of >10,000 events was performed.*

#### Preparation & Storage

- Store at -20°C in small aliquot for long term storage. Avoid freeze/thaw cycle of the reagent.
- Shipped at 2-8°C. Store at 2-8°C for short term (1 month).
- The polyclonal antibody was purified by Protein A.

#### Application Notes

##### Application

Flow cytometry

Routinely Tested

#### Intellectual Product Notices

1. Conditions: The information disclosed herein is not to be construed as a recommendation to use the above product in violation of any patents. BioSwan will not be held responsible for patent infringement or other violations that may occur with the use of our products. Purchase does not include or carry any right to resell or transfer this product either as a stand-alone product or as a component of another product. Any use of this product other than the permitted use without the express written authorization of BioSwan Company is strictly prohibited. For Research Use Only. Not for use in diagnostic or therapeutic procedures. Not for resales. BioSwan, the BioSwan Logo and all other trademarks are property of BioSwan Laboratories, Co., Ltd.

BioSwan Laboratories, Co., Ltd. | Rm304, No. 7 Building, No. 1888 Xinqin Road, Shanghai, Shanghai, P.R.China  
[www.bioswan.com](http://www.bioswan.com) | [info@bioswan.com](mailto:info@bioswan.com) | +86-21-50207339