

## Technical Data Sheet

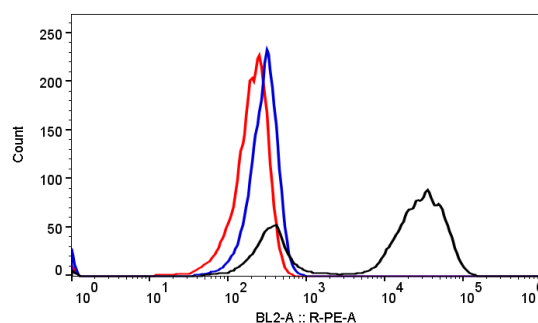
### Rabbit IgG Isotype Control, PE

#### Product Information

Material Number:	700306
Size:	100 tests
Vol. per Test	1 $\mu$ L
Antibody Types	Monoclonal
Clone:	6B2
Immunogen:	KLH
Host:	Rabbit
Isotype:	IgG
Storage Buffer:	Aqueous buffered solution containing protein stabilizer and $\leq 0.05\%$ ProClin 300

#### Background

Isotype controls are negative controls that are designed to measure the amount of non-specific background signal caused by the primary antibody. Isotype controls have no specificity for the target protein, yet retain all of the non-specific characteristics of an antibody.



*Flow cytometric analysis of anti-CD19 CAR expression on human cell line Jurkat cells. Jurkat cells were transduced with lentivirus encoding anti-CD19 CAR and cultured.  $2 \times 10^5$  cells were stained with Rabbit Anti-Mouse FMC63 scFv Monoclonal antibody, PE (Cat. No. 200106) (black) compared to Rabbit IgG Isotype Control, PE (Cat. No. 700306) (blue), or unstained (red). Acquisition of  $>10,000$  events was performed.*

#### Preparation and Storage

Store undiluted at 2-8 °C and protected from prolonged exposure to light. Do not freeze.  
The monoclonal antibody was purified by Protein A.  
The antibody was conjugated with R-PE under optimum conditions.

#### Application Notes

Application

Flow cytometry

Routinely Tested

#### Product Notices

1. Negative control for use in conjunction with BioSwan Laboratories antibodies. This isotype control has been derivatized with a quantity of fluorochrome that matched the F/P (fluorochrome/protein) ratio of BioSwan Laboratories monoclonal reagents. The recommended concentration is 1  $\mu$ L /test.
2. Caution: Antibody solutions containing ProClin 300 should be handled with care. Do not take internally and avoid all contact with the skin, mucosa and eyes.
3. Conditions: The information disclosed herein is not to be construed as a recommendation to use the above product in violation of any patents. BioSwan will not be held responsible for patent infringement or other violations that may occur with the use of our products. Purchase does not

include or carry any right to resell or transfer this product either as a stand-alone product or as a component of another product. Any use of this product other than the permitted use without the express written authorization of BioSwan Company is strictly prohibited.  
For Research Use Only. Not for use in diagnostic or therapeutic procedures. Not for resales.  
BioSwan, the BioSwan Logo and all other trademarks are property of BioSwan Laboratories, Co., Ltd..