

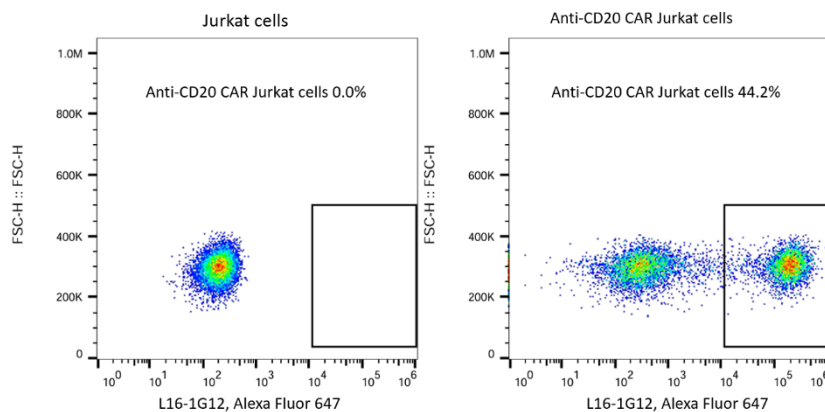
## Technical Data Sheet

### Rabbit Anti-Leu16 Monoclonal Antibody

Product Information	
Product No.	219219
Concentration	1.0 mg/mL
Size	100 µg
Antibody Types	Monoclonal
Antibody Format	Whole IgG
Clone	L16-1G12
Immunogen	scFv region of a CD20-specific Mouse mAb clone Leu16
Host Species	Rabbit
Reactivity	Mouse
Storage Buffer	PBS, pH 7.4
Storage conditions	-20°C

#### Description

The rabbit monoclonal antibody L16-1G12 specifically binds to the scFv region of a CD20-specific mouse monoclonal antibody (mAb, clone Leu16). CD20 (cluster of differentiate 20) is a protein that is expressed on the surface of B cells, starting at the pre-B cell stage and on mature B cells in the bone marrow and in the periphery. CD20 is not expressed on hematopoietic stem cells, pro-B cells, or normal plasma cells. The scFv region of Leu16 has been used to develop CD20-specific chimeric antigen receptor (CAR) T cells utilized in clinical trials.



**Flow cytometric analysis of anti-CD20 CAR expression on human cell line Jurkat cells.** Jurkat cells were transduced with lentivirus encoding anti-CD20 CAR and cultured.  $2 \times 10^5$  cells were stained for the expression of anti-CD20 CAR with Rabbit Anti-Leu16 Monoclonal Antibody (Product No. 219219, right panel). Secondary staining was carried out with AffiniPure F(ab')<sub>2</sub> Fragment Goat anti-Rabbit IgG(H+L), Alexa Fluor 647 (Product No. 700002). Non-transduced Jurkat cells were used as a control for gating of CAR expression (left panel).

#### Preparation & Storage

- Store undiluted at -20°C.
- Avoid freeze/thaw cycle of the reagent.
- The monoclonal antibody was purified by Protein A.

#### Application Notes

Application

Flow cytometry	Routinely Tested
----------------	------------------

#### Intellectual Product Notices

1. Conditions: The information disclosed herein is not to be construed as a recommendation to use the above product in violation of any patents. BioSwan will not be held responsible for patent infringement or other violations that may occur with the use of our products. Purchase does not include or carry any right to resell or transfer this product either as a stand-alone product or as a component of another product. Any use of this BioSwan Laboratories, Co., Ltd. | Rm304, No. 7 Building, No. 1888 Xinqiao Road, Shanghai, China [www.bioswan.com](http://www.bioswan.com) | [info@bioswan.com](mailto:info@bioswan.com) | +86-21-50207339

---

product other than the permitted use without the express written authorization of BioSwan Company is strictly prohibited.  
For Research Use Only. Not for use in diagnostic or therapeutic procedures. Not for resales.  
BioSwan, the BioSwan Logo and all other trademarks are property of BioSwan Laboratories, Co., Ltd.